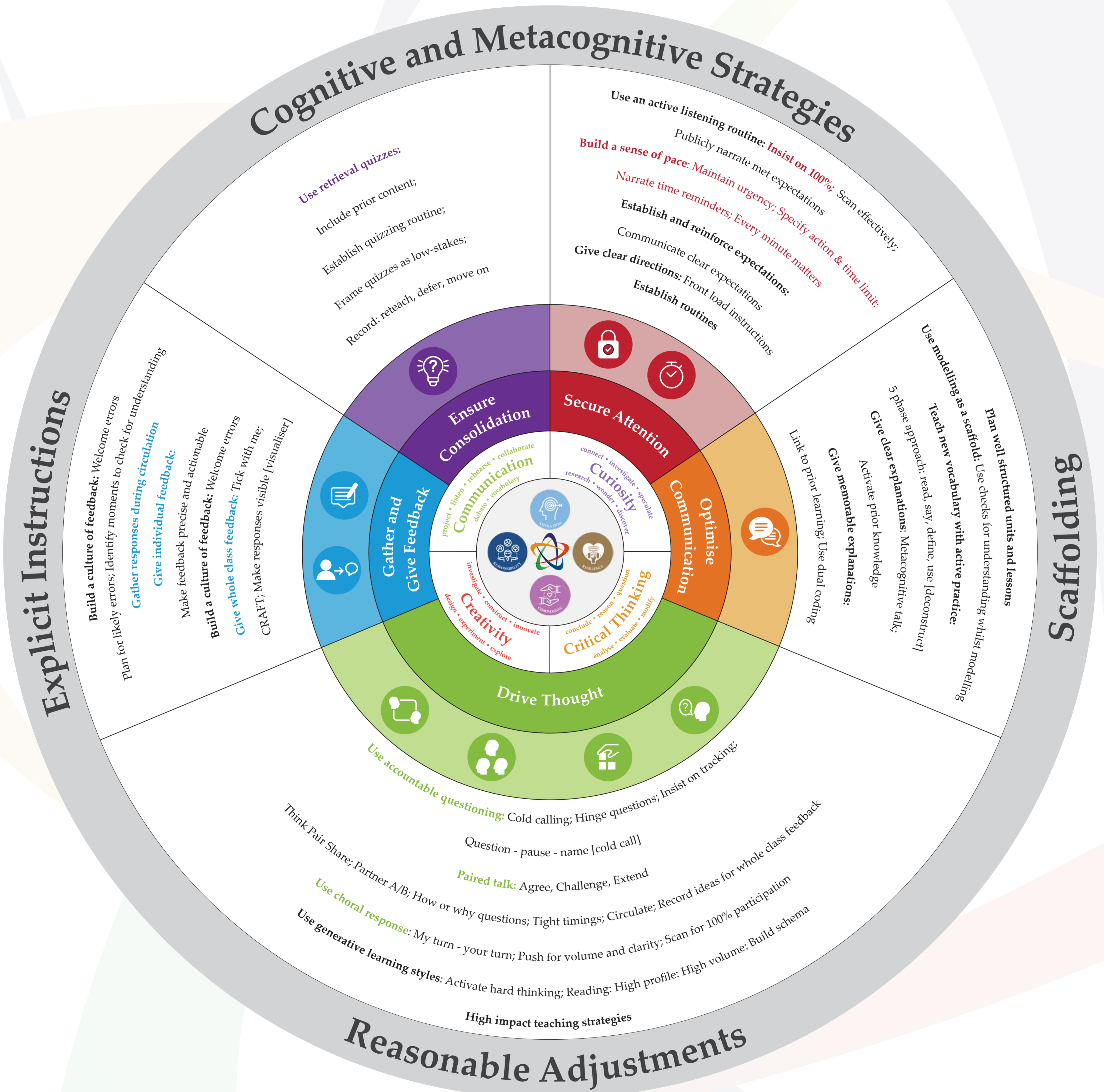


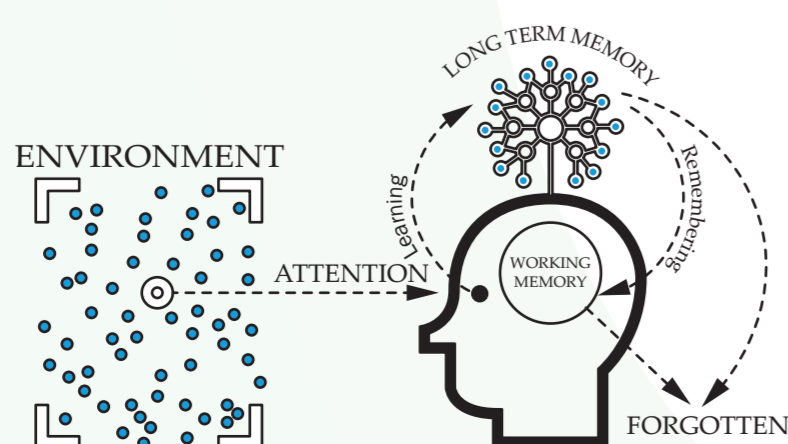
# The GLC Pedagogy Wheel

We teach for the understanding, retention and application of knowledge and the development of transferable learning competencies [communication, critical thinking, creativity and curiosity]. Teaching and learning strategies drive thought and check pupils' understanding - every minute matters.



## A Relentless Focus on Academic Achievement

### The Learning Model



Scan to watch the video



**Inclusive Teaching & Learning Strategies**



**Strategies to Raise Attainment for Under-resourced Pupils.**

Frequent Teacher Feedback  
Data Driven Instruction  
High-Dosage Tutoring